



BEYOND

Building epidemiological surveillance and prophylaxis with observations both near and distant

Cindy E. Morris – *INRAE-PACA, UR0407 Pathologie Végétale*
with Samuel Soubeyrand – co-coordonateur, *INRAE-PACA, UR0546 BioSP*

Kick-off meeting, 23 Septembre 2020



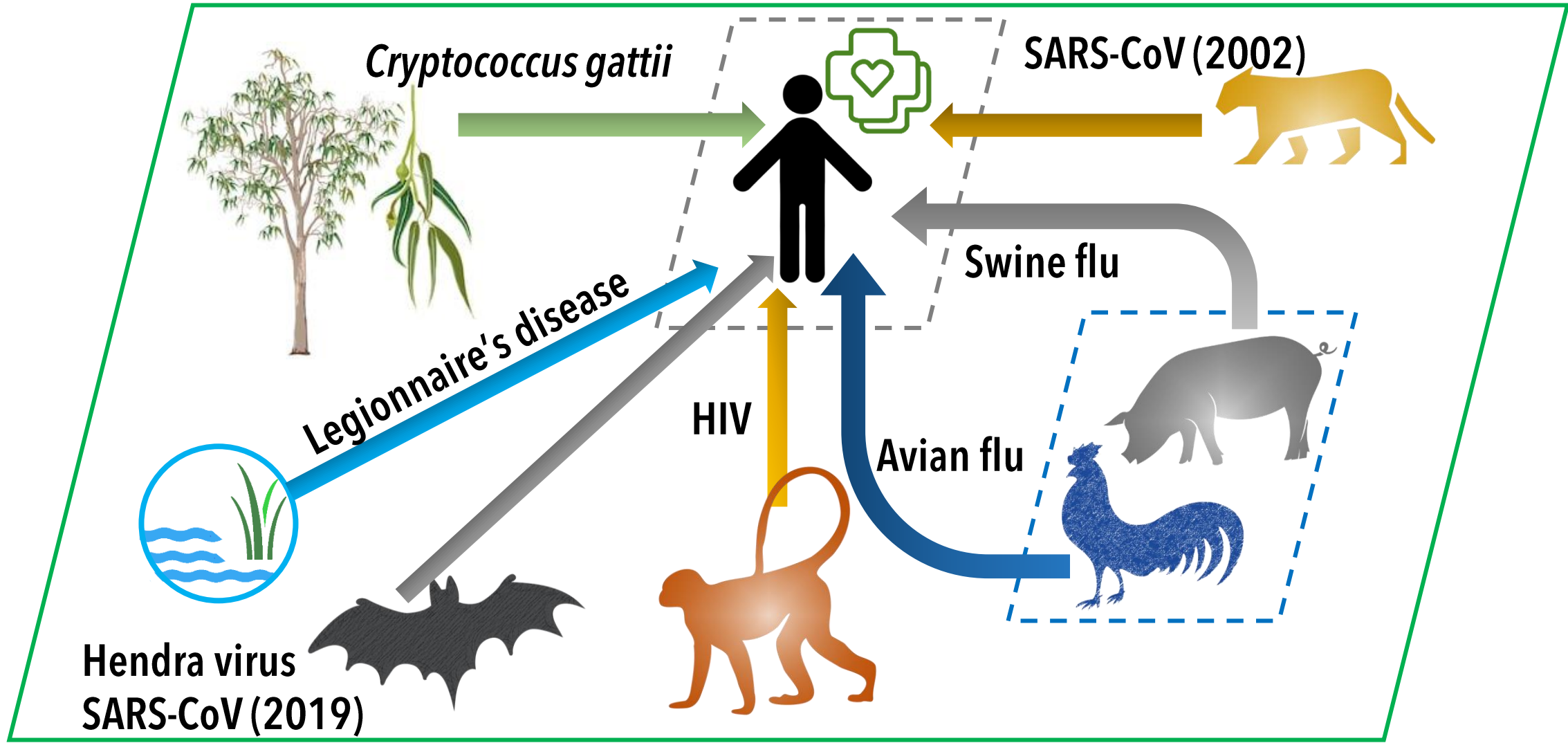
CONTEXT



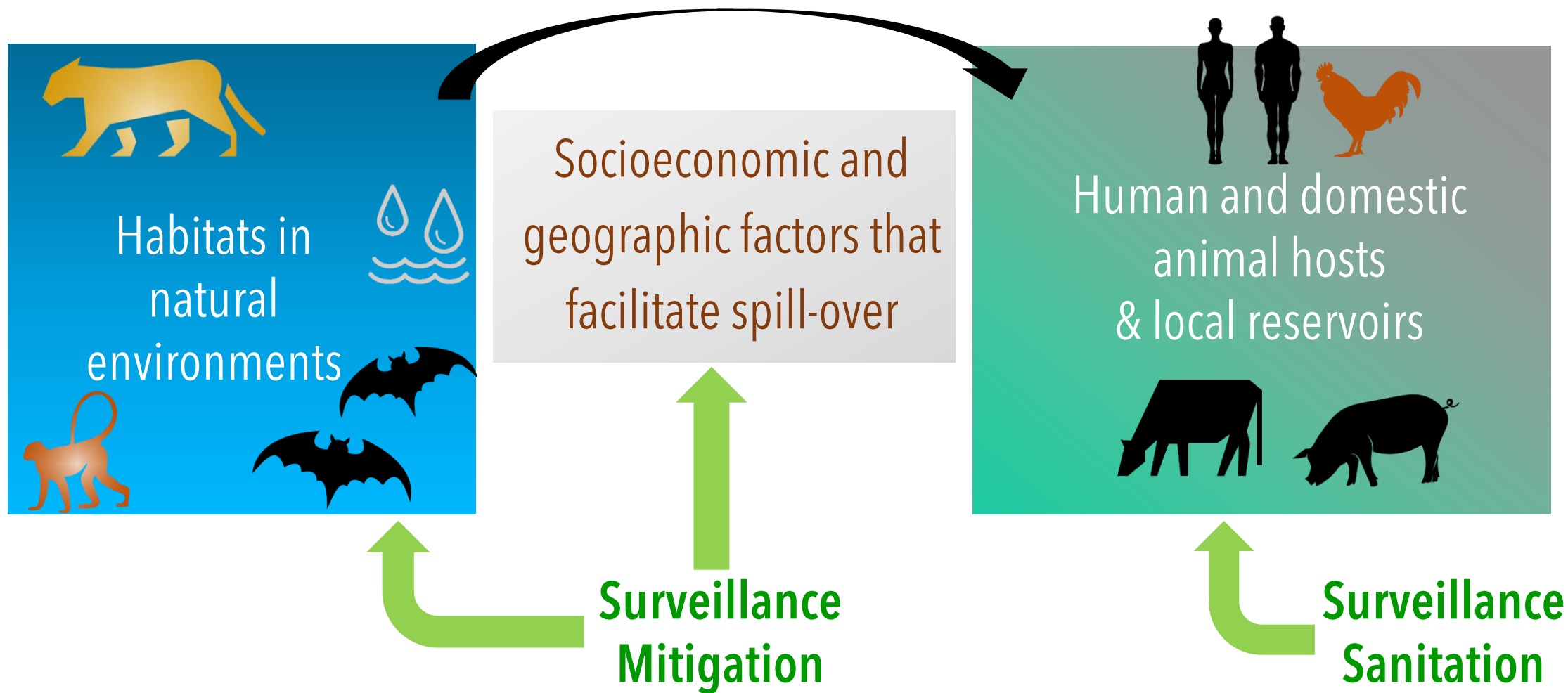
A MANUAL OF HYGIENE
AND SANITATION



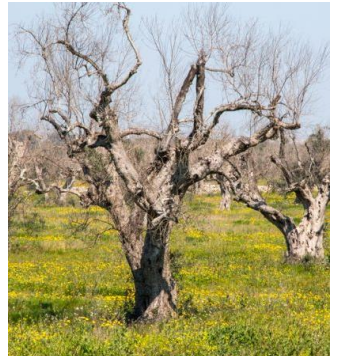
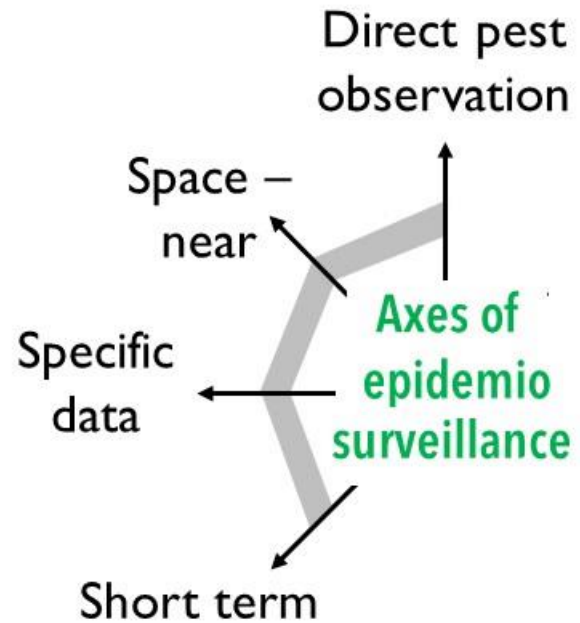
Emergence of novel human diseases



One Health: a complex multifactor framework for epidemiology



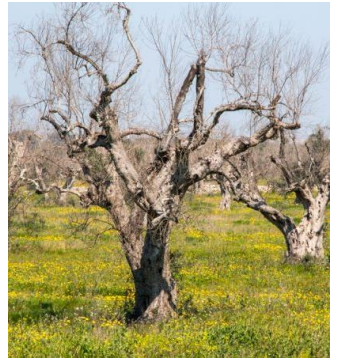
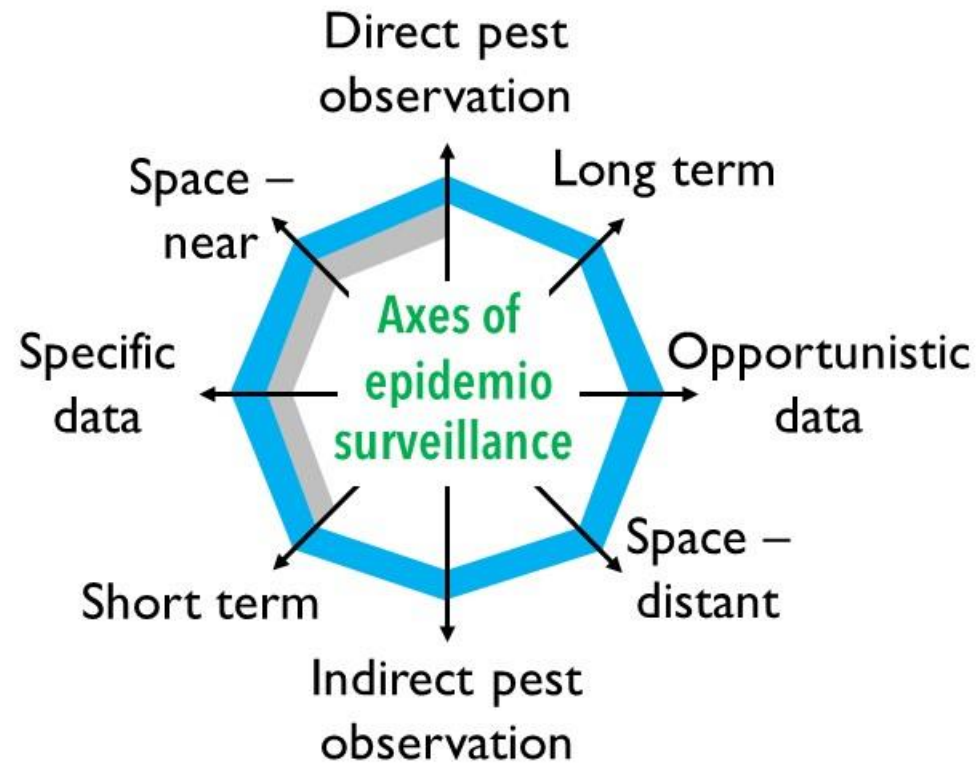
Today



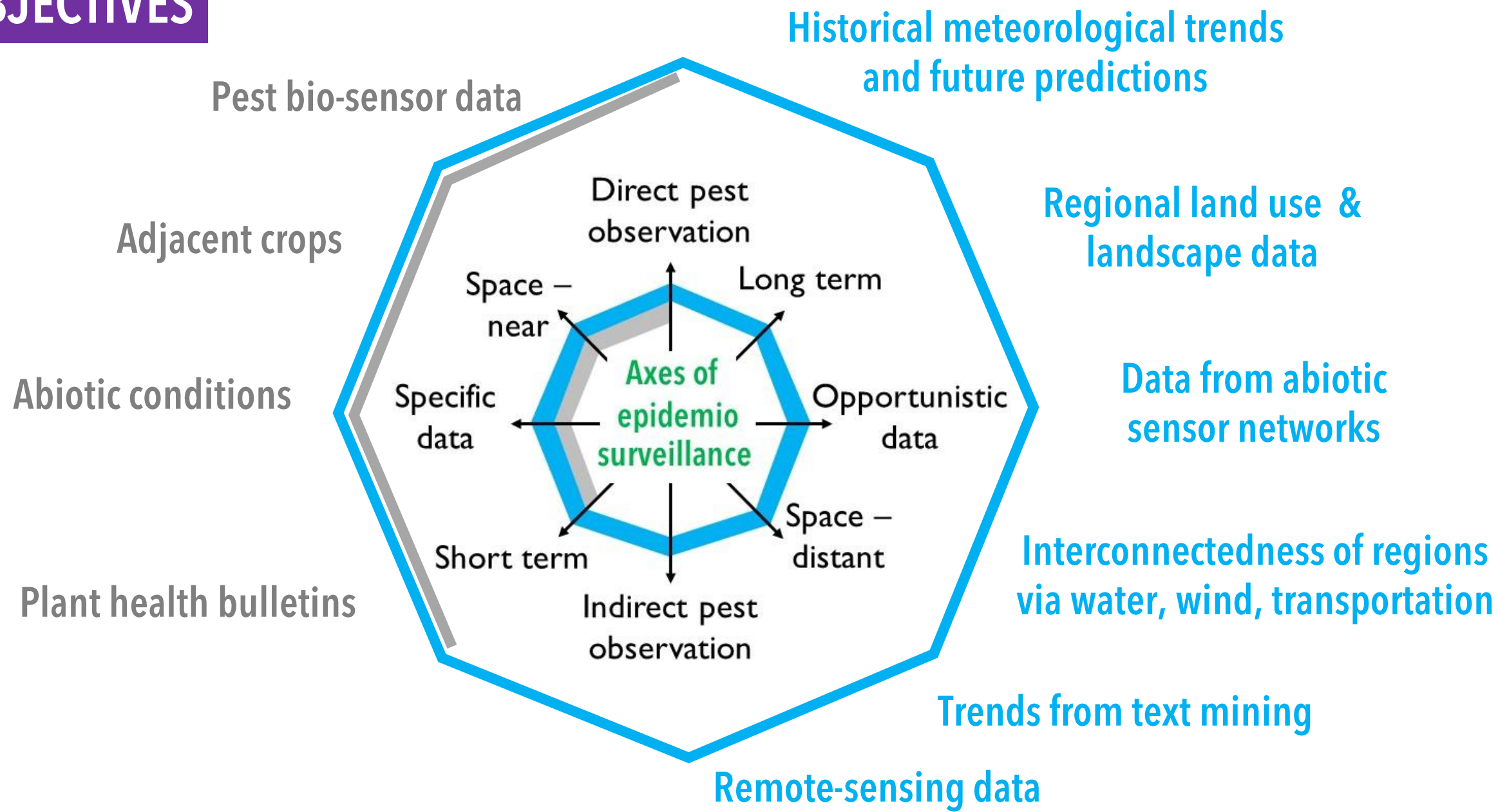
OBJECTIVES

Build a complex multifactor framework for plant disease epidemiology

Tomorrow

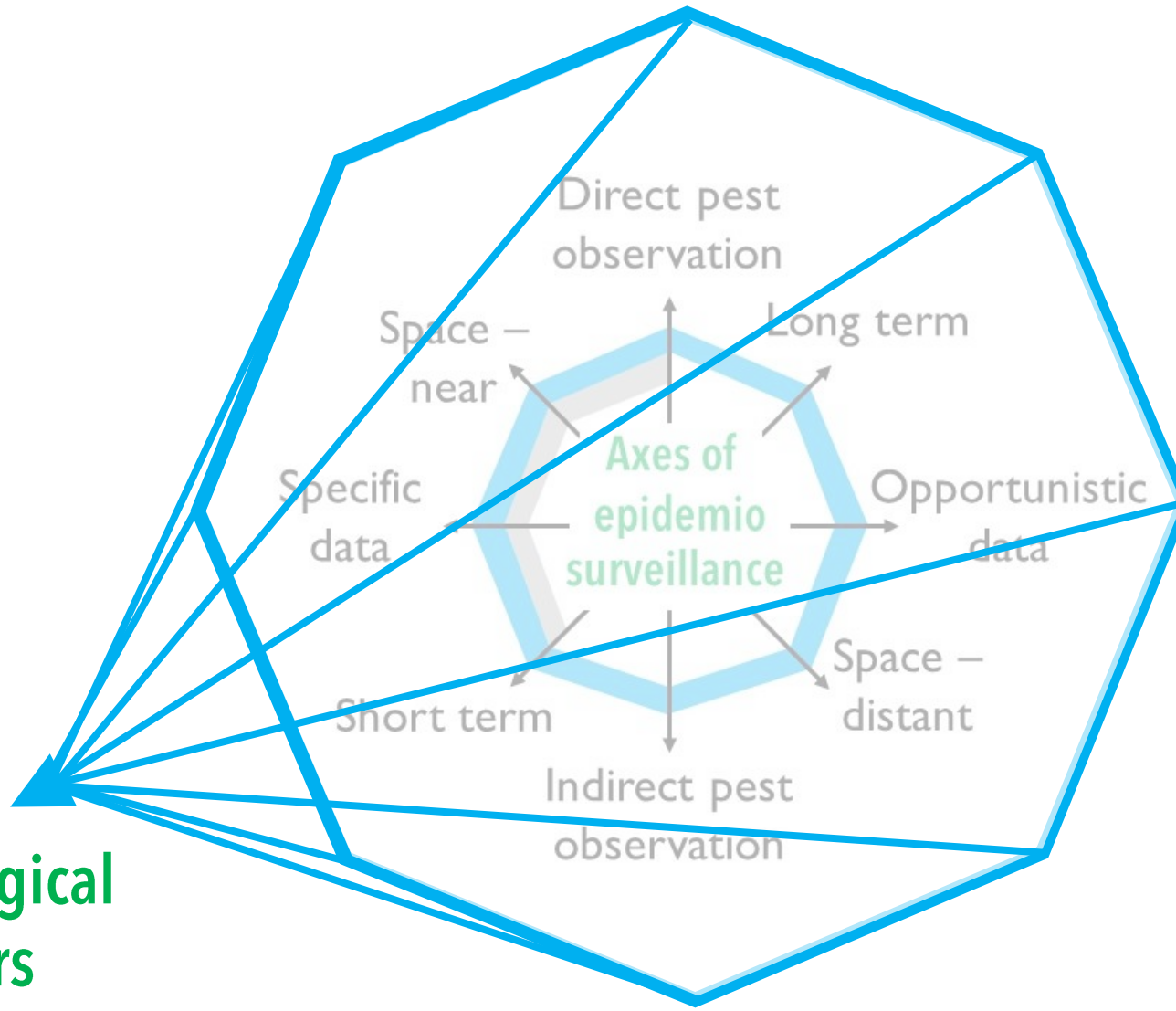


OBJECTIVES



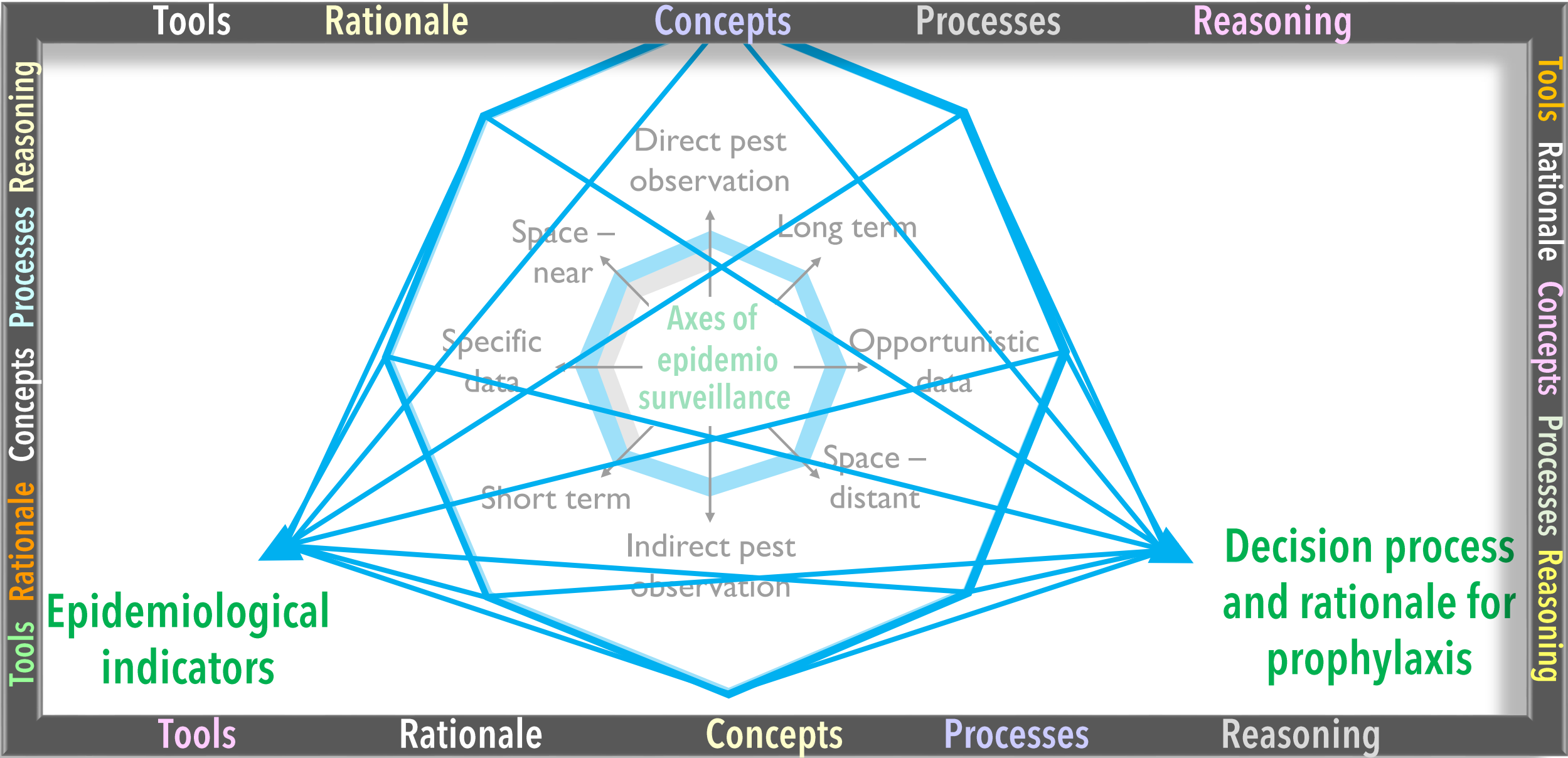
OBJECTIVES

Epidemiological indicators



OBJECTIVES

FRAMEWORK



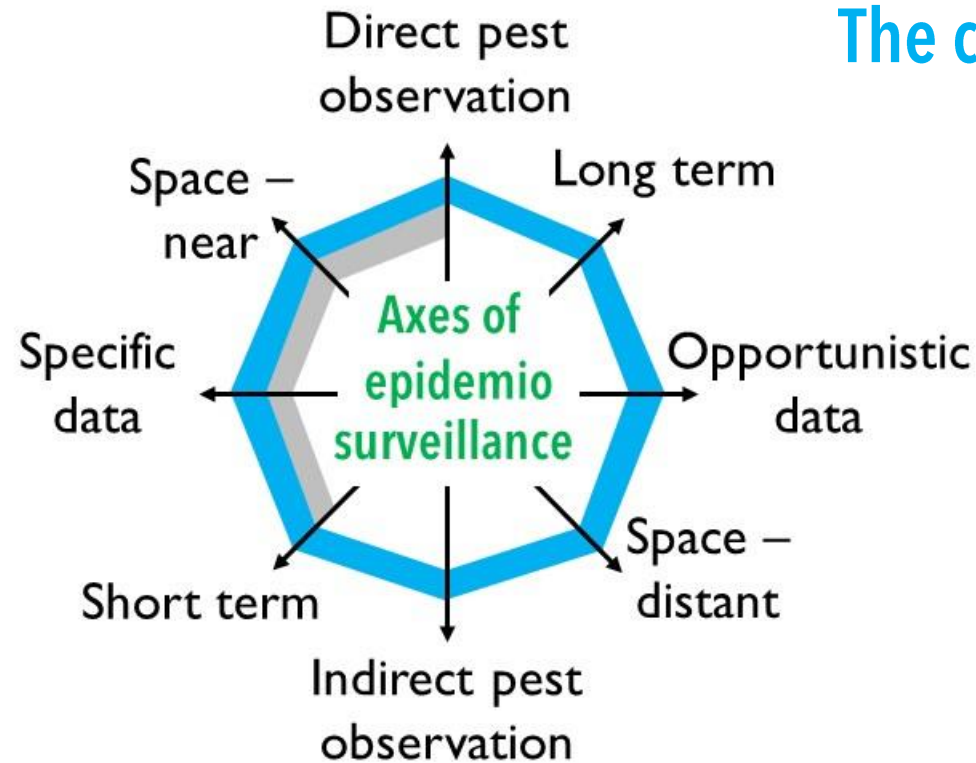
EXPECTED ACHIEVEMENTS

Today



Tomorrow

The context for BEYOND



New epidemiological indicators

New decision processes and rationale for prophylaxis

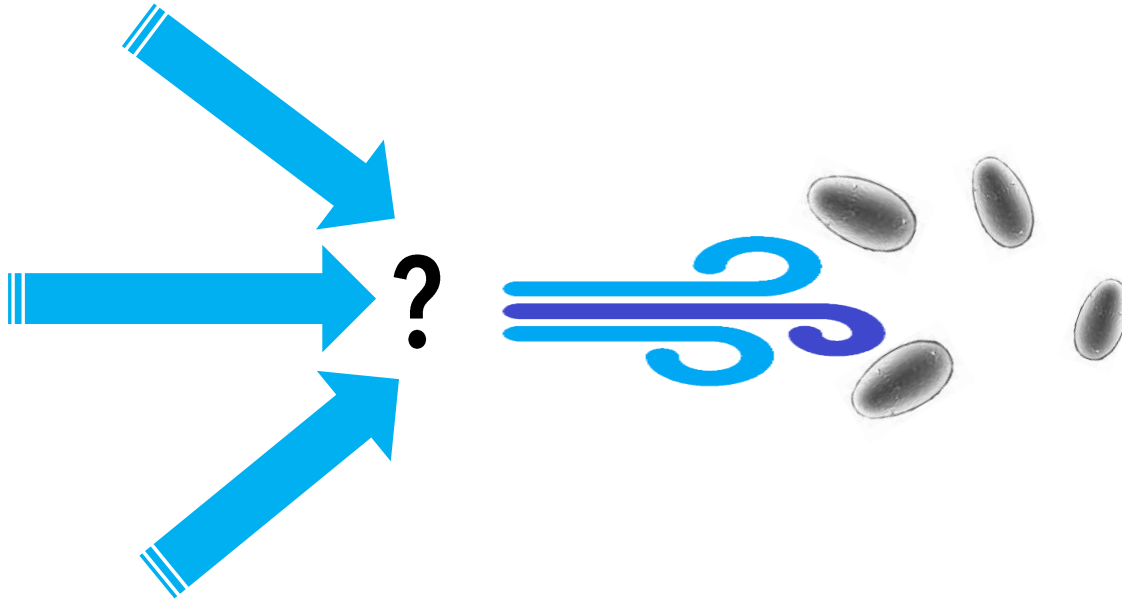
EXPECTED ACHIEVEMENTS

Create more opportunities
and increase the critical time period
for implementation of prophylaxis

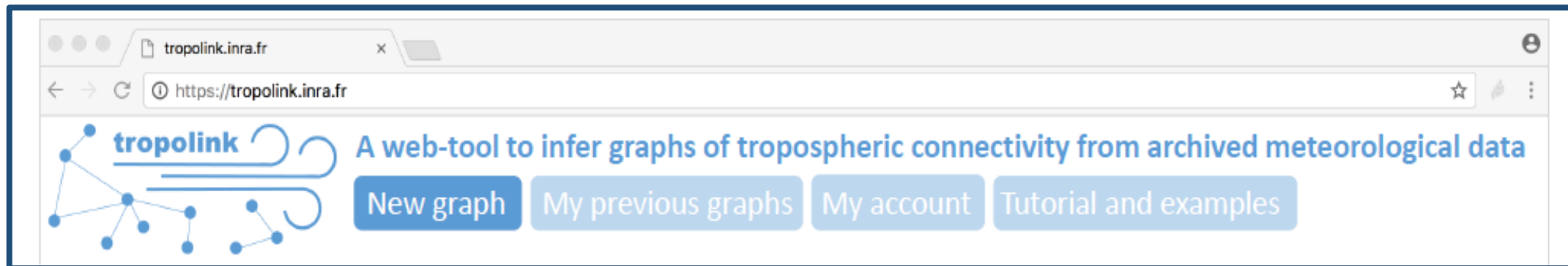
Create approaches that can be applied to multiple patho-systems

Train scientists, surveillance services, field technicians & farmers in the underlying rational

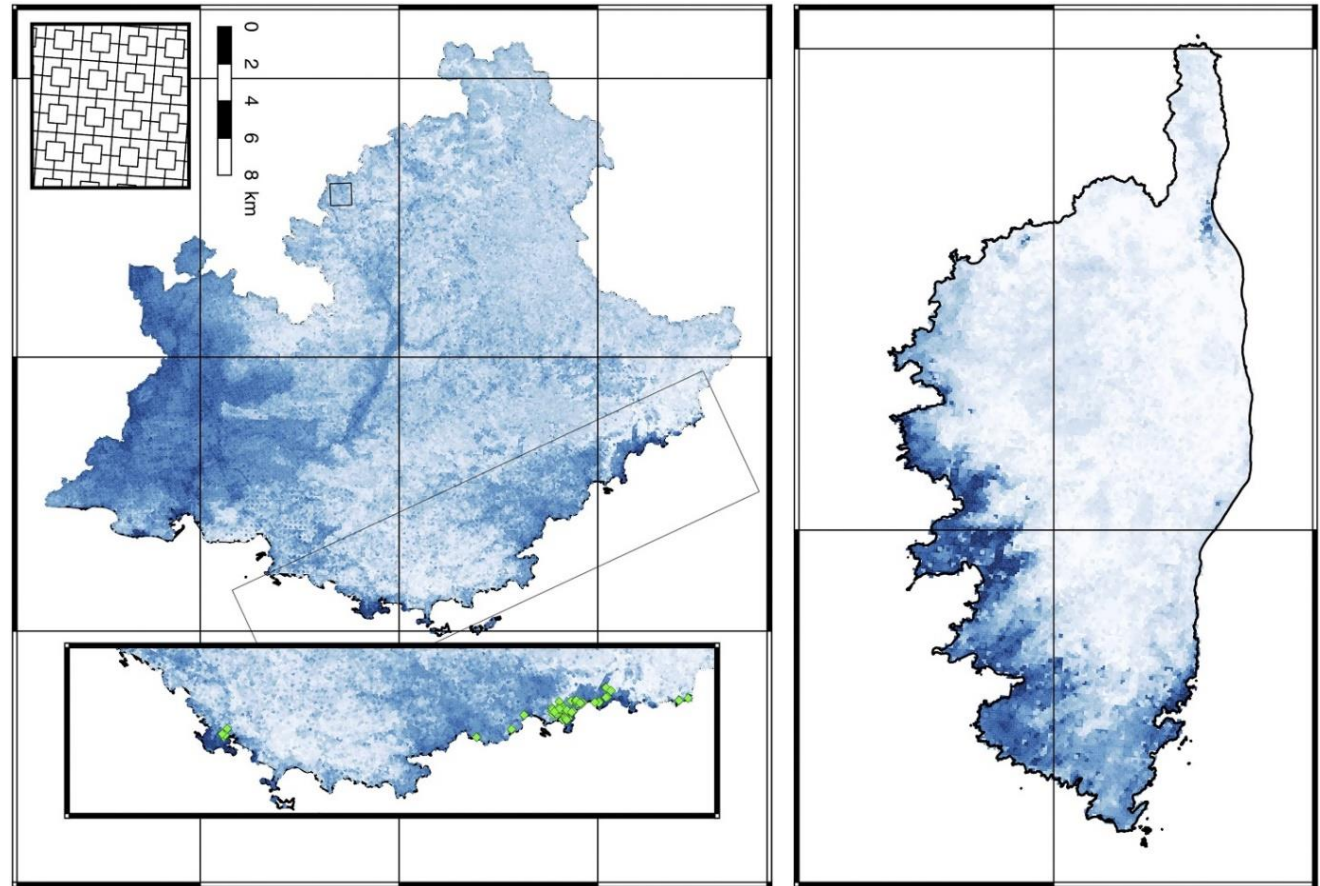
Survey for disease and pest risk upwind, long before they arrive



Example:
Powdery mildew



Identify opportunities to mitigate disease before it occurs



Risk of occurrence in continental FR based on incidence in Corsica

Social Sciences & Humanities

- Econometrics
- Consumer / Stakeholder Choice & Behavior
- Communication & Learning

Life Sciences

- Plant Biology
- Agronomy
- Microbiology
- Entomology
- Molecular Biology
- Ecology

Physical & Engineering Sciences

- Applied Math
- Statistics
- Numerical Analysis
- Scientific Computing
- Computer Science
- Information & Intelligent Systems
- Data Base Management
- Graphics and Image Processing
- Business Intelligence

INRAE - PACA @Avignon

Plant Pathology

- Cindy Morris: *coordinator, WP1*
- Christel Leyronas: *WP6*
- Odile Berge • Christel Lacroix • Marc Bardin
- Eric Verdin • Alexandra Schoeny • Cécile Desbiez
- 11 technical staff



Biostatistics and Spatial Processes

- Samuel Soubeyrand: *co-coordinator, WP2*
- Davide Martinetti: *WP3*
- Edith Gabriel: *WP4*
- Denis Allard • Olivier Martin • Hervé Richard
- Associated partner: ESV platform



Ecodevelopment

- Ghislain Géniaux: *WP5*
- Marc Tchamitchian • Rodolphe Sabatier • 1 technical staff

INRAE - Montpellier

Land, Environment, Remote Sensing and Spatial information

- Dino Ienco • Pierre Maurel
- Remi Decoupes • Mathieu Roche
- Maguelonne Teisseire



Biology and Genetics of Plant-Pathogen Interactions

- Claire Neema: *WP7*
- Gaël Thebaud • Sylvie Dallot • Nicolas Sauvion
- Catherine Abadie • Fabienne Ribeyre
- 1 technical staff



INRAE - Clermont Auvergne-Rhone-Alpes

Technologies and Information Systems for Agro-systems

- Sandro Bimonte • François Pinet
- Jean-Pierre Chanet • Associated partner: Univ. Bologna



INRAE - Bordeaux



Fruit Biology and Pathology

- Sylvie Malembic-Maher • Xavier Foissac
- 1 technical staff
- Associated partner: Groupement de Défense contre les Organismes Nuisibles



Health & Agroecology of Vineyards

- François Delmotte • Frédéric Fabre • 1 technical staff member



université PARIS-SACLAY INRAE - Jouy-en-Josas MaIAGE

Applied Mathematics & Informatics from Genome to Environment

- Claire Nédellec • Louise Deléger • Mouhamadou Ba
- Robert Bossy • Valentin Loux • Arnaud Ferré

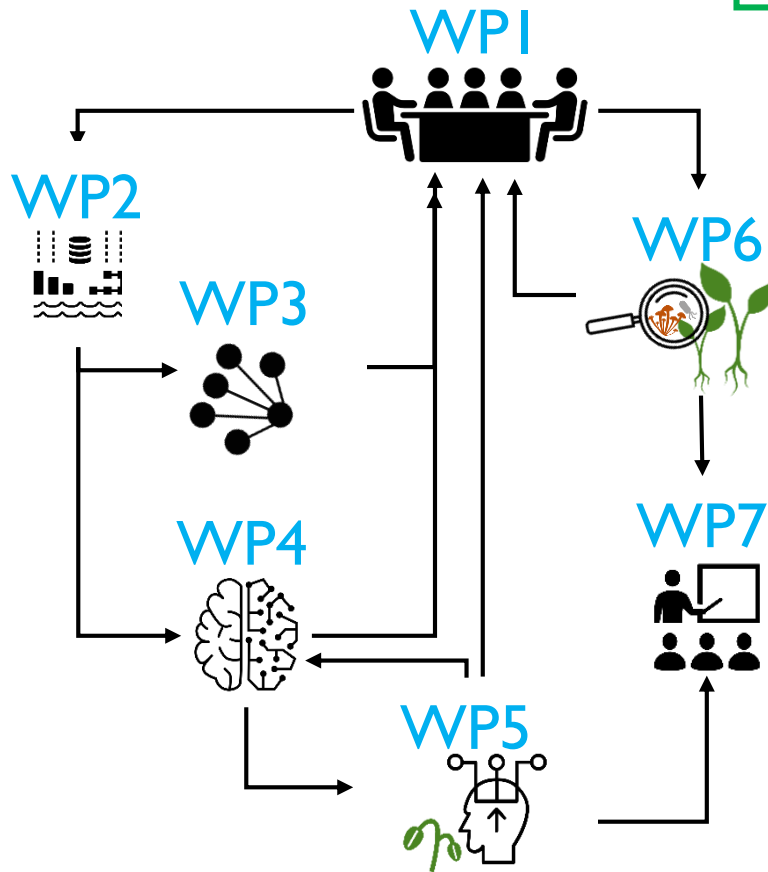
cirad - La Réunion

Plant Populations and Bioagressors in Tropical Environments

- Virginie Ravigné • Olivier Pruvost • 1 technical staff member


HOW

7 Work Packages

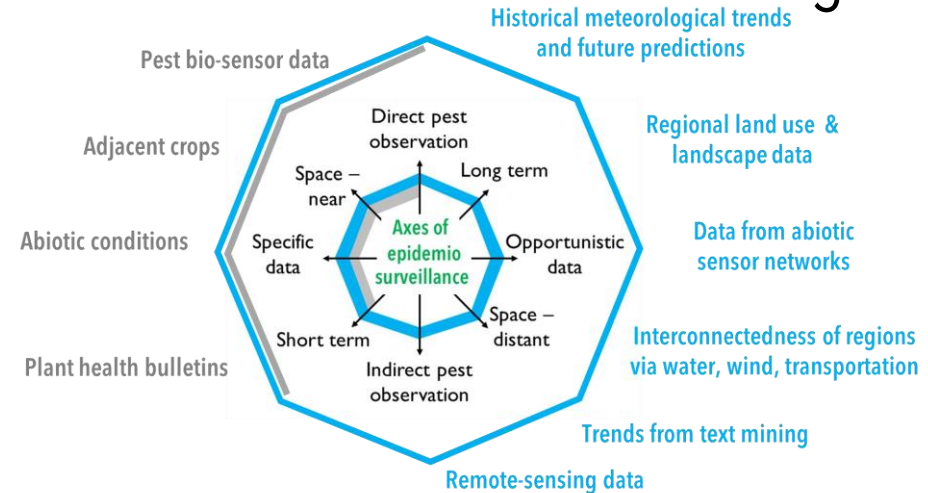


Ample epidemiological data for 8 patho-systems

 3 patho-systems

 5 patho-systems

Multiple sources of data in these categories



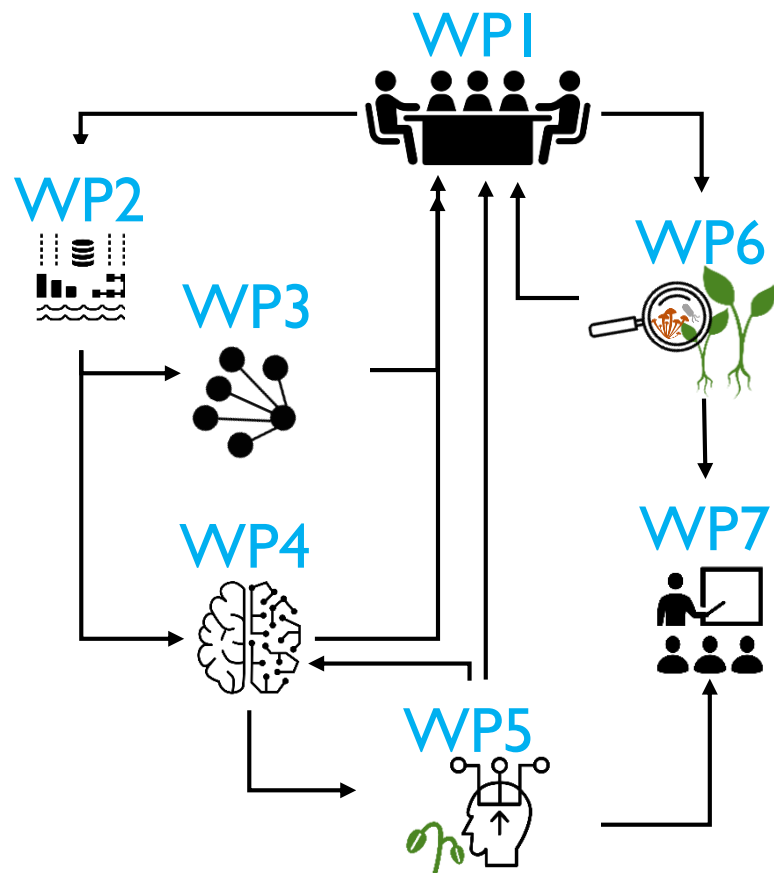
Make new epidemiological indicators

Conceive new opportunities for prophylaxis

Document and transfer experience to 7 other patho-systems

HOW

7 Work Packages



WP2: Web portal of data, services, risk factors & meteorological projections

WP3: Disease surveillance strategies based on network construction and analysis

WP4: Learn & predict risk (AI, machine learning), and optimize surveillance now and in future

WP5: Decipher & describe the decision process for plant health management

WP1: Manage the project's intelligence and interdisciplinarity: identify needs, transfer competence, construct the paradigm

WP6: Develop a guide for designing enhanced ES systems to optimize deployment of prophylaxis in a new age of data availability and scope

WP7: Build capacity for new ES via training



S. Soubeyrand
BioSP - Avignon



D. Martinetti
BioSP - Avignon



E. Gabriel
BioSP - Avignon



G. Géniaux
Ecodev - Avignon



C.E. Morris
PV - Avignon



C. Leyronas
PV - Avignon

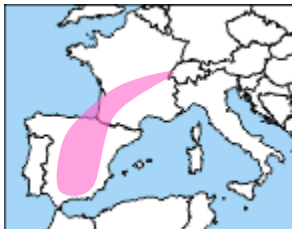


C. Neema
BGPI/PHIM-SupAgro

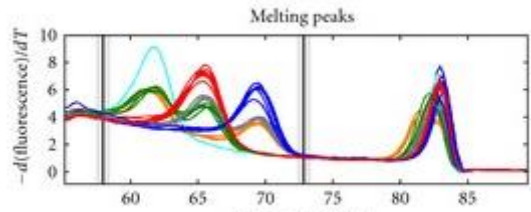
INDICATORS THAT BEYOND CONTRIBUTES TO A FUTURE w/o PESTICIDES



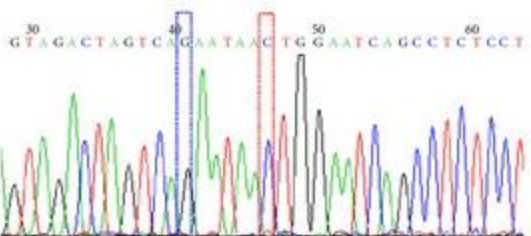
Official surveillance schemes
- co-constructed with stakeholders
- evaluated by technical institutes



Regional partnerships to reduce inter-flux of pests



Diagnostics to gage pathogenic potential



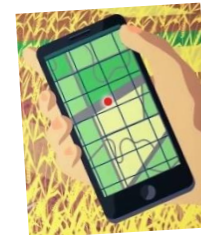
Risk maps



Technical documents



Trainees



Decision support systems



For more details about BEYOND, contact

cindy.morris@inrae.fr

samuel.soubeyrand@inrae.fr

and visit our website (end of 2020, early 2021):

<https://www6.inrae.fr/beyond>